

SERVICE BULLETIN

AMATEUR RADIO

SUBJECT

TS-930S CW Pitch Tone Shift

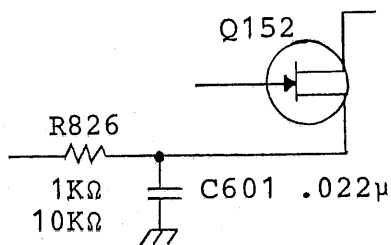
DATE

7-06-83

Some users of the TS-930S have reported a slight change in the CW pitch tone when the MONI switch is turned ON and OFF.

This may be corrected by changing the following components:

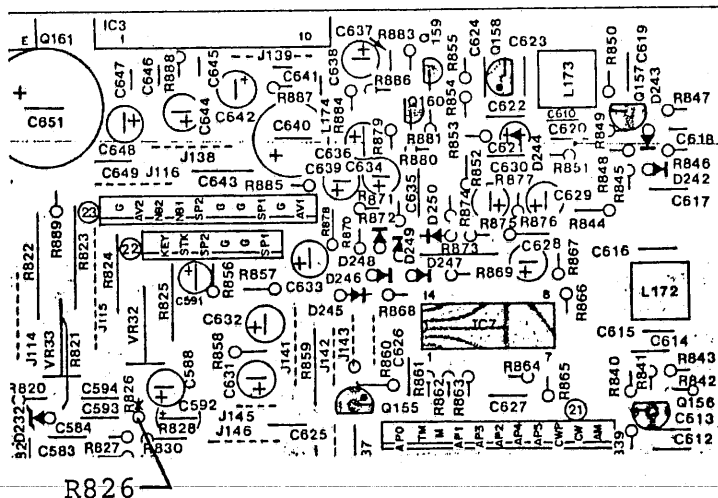
On the Signal Unit (X57-1000-XX) change R826 from a 1K ohm to a 10K ohm, part no. RD14CB2E103J and remove C601, a .022 μ F capacitor from the foil side of the circuit board.



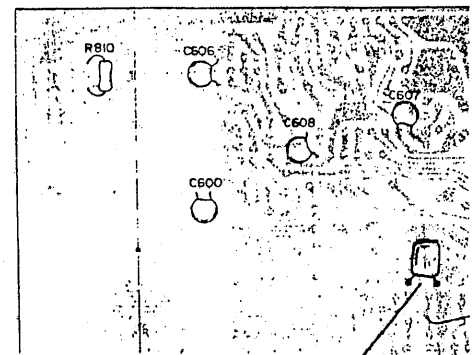
Schematic address: F,8

SIDETONE MIXER

Component side view



Foil side view



Remove C601

Notes: This change applies to units before S/N 3070221.
Installation time for this procedure is ½ hour or less.

CLM/clm