

SERVICE BULLETIN

AMATEUR RADIO

SUBJECT TS-940S ANTENNA TUNER RELAYS	DATE 4-4-86
---	----------------

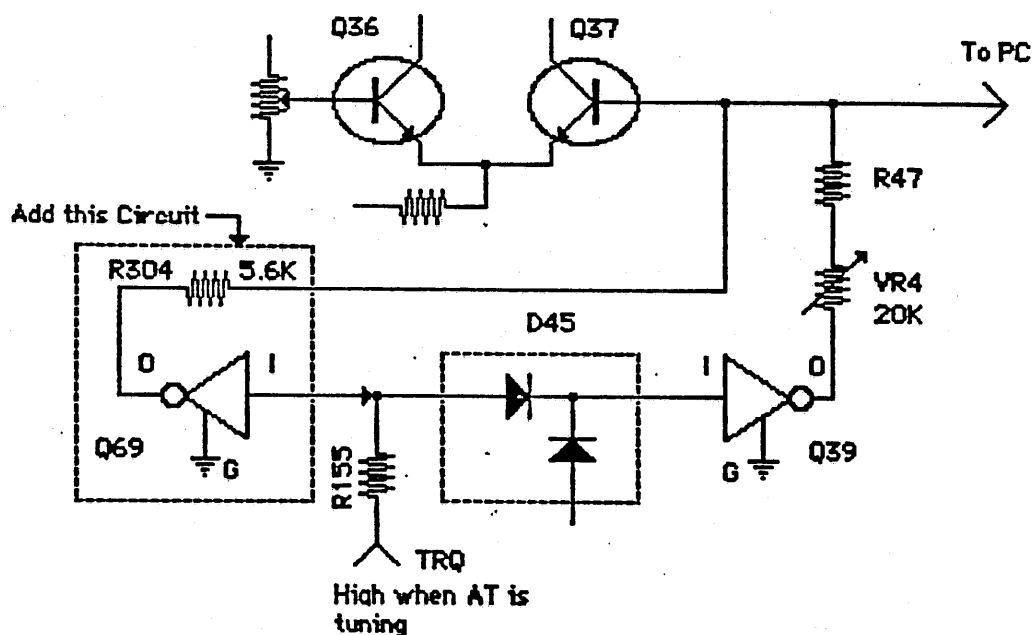
Occasionally during operation of the AT-940 a VSWR of greater than 1.5 to 1 might cause overloading of the relay contacts in the antenna tuner. This may be especially noticeable when switching BANDS, or if TUNING is performed too frequently. The following procedure should reduce or eliminate this tendency.

Parts Required

Q69: Digital TransistorDTC124ES
R304: 5.6K ohm 1/6 W Resistor.....RD14BB2C562J

Procedure:

1. Add the circuit as shown below.
2. After the circuit has been installed adjust VR4 for a 10-15 watt output when the antenna tuner operates.

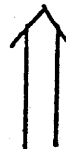
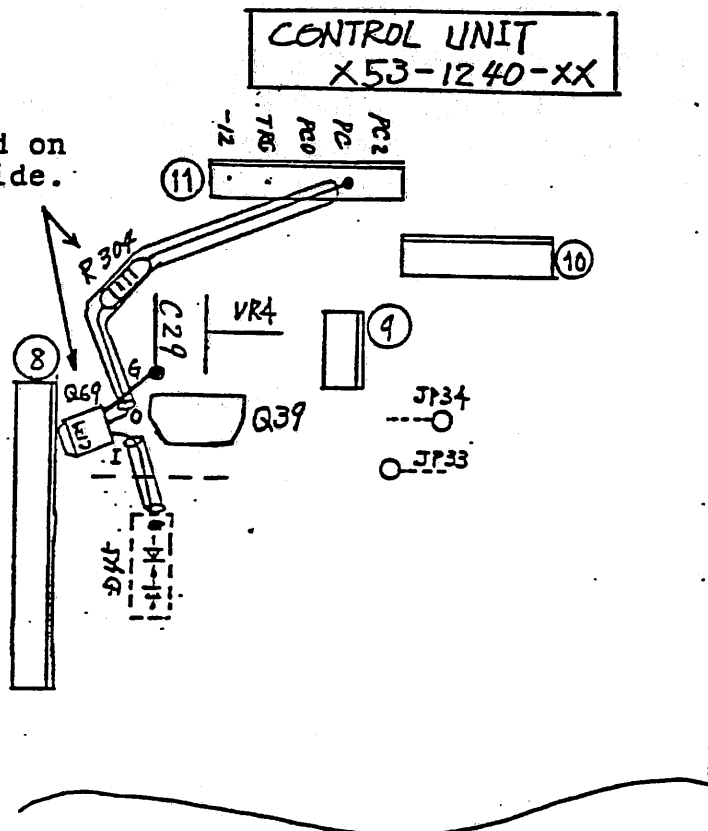


Page 1 of 2

Time Required for this modification is 1 hour or less. ©TKC32186CLM

ADD

* Mounted on foil side.



R

Component side view.

