

SERVICE BULLETIN

AMATEUR RADIO

SUBJECT

TS-940S AGC CIRCUIT IMPROVEMENTS

DATE

6-03-86

The following changes will improve the adjacent channel rejection of the TS-940S when a relatively strong nearby signal is present (S-4 or above).

The AGC switch should remain in the SLOW position for all but high speed data communications. Most CW operations will also benefit from operation in the SLOW position.

Parts Required:

15 K ohm 1/4 watt resistor.....RD14CB2E153J
1 uF 16v Electrolytic.....CE04BW1E010M
1S1555 diode.....V1S1555
.047 uF capacitor.....C91-0119-05

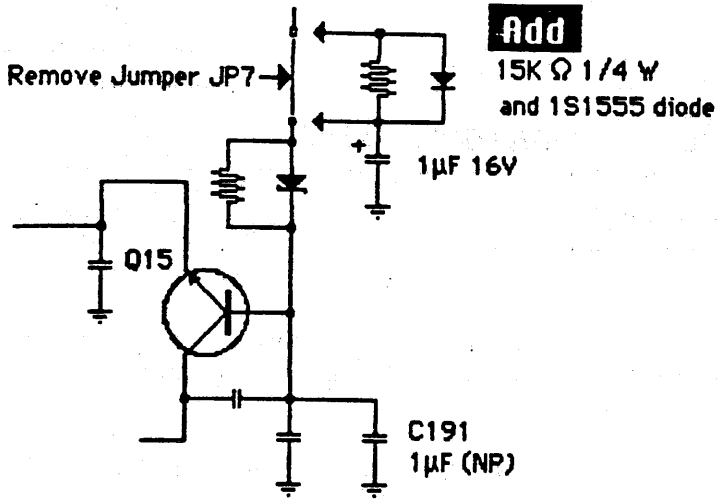
Procedure:

RF UNIT

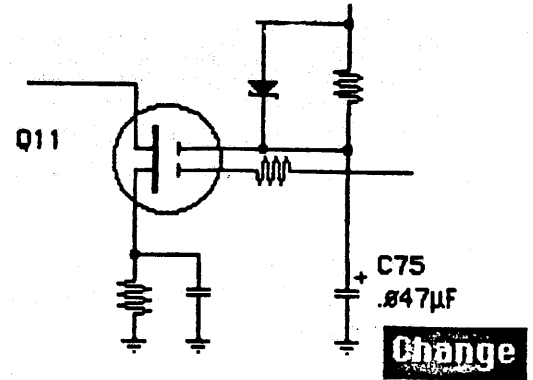
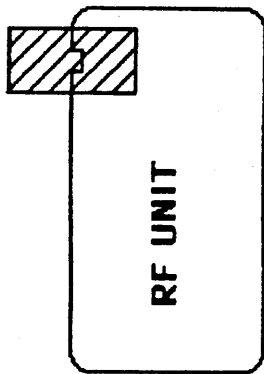
1. Remove jumper wire JP7 and replace it with the parallel combination of the 15 k ohm resistor and the 1S1555 diode. Pay close attention to polarity.
2. Add the 1 uF capacitor as shown in the diagram.

IF UNIT

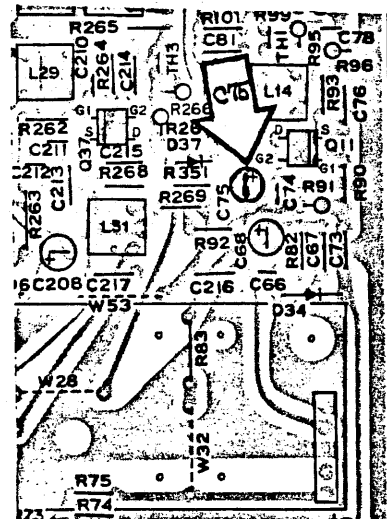
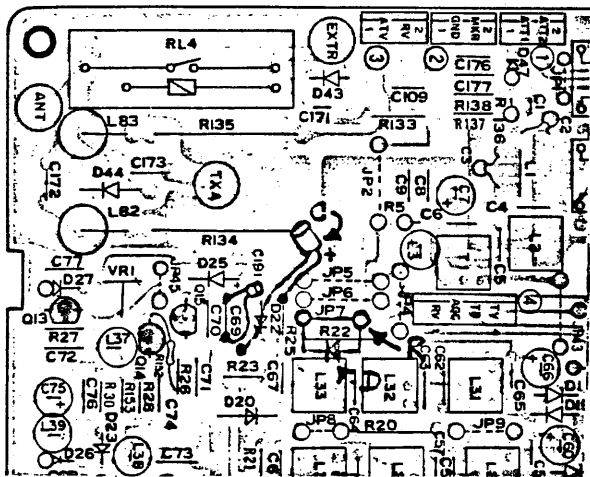
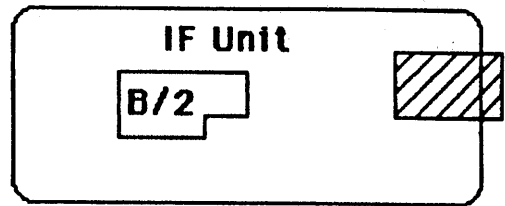
Change capacitor C75 from a 1 uF 50 v capacitor to a .047 uF 50v capacitor.



RF Unit



IF Unit



Time required for this modification is 1 hour or less.
©41086TKCCLM