

SERVICE BULLETIN AMATEUR RADIO

SUBJECT TS-950S/SD 80 METER SPURIOUS EMISSION	DATE 02/06/91
---	-------------------------

Some TS-950SD owners have reported a transmit spurious emission between 3.500MHz and 3.520MHz. This modification will reduce the spurious emission to -65dB.

REQUIRED PARTS:

10pF CAPACITOR	CC73FCH1H100J	QTY. 1
16pF CAPACITOR	CC73FCH1H160J	QTY. 1
12uH COIL	L40-1201-17	QTY. 1
2.6X4MM SCREWS	N09-0650-05	QTY. 4

1. Disconnect the power cord and antenna.
2. Remove the top and bottom covers (18 screws).
3. Open the subchassis to expose the PLL board (Figures 1-3). To open the subchassis remove 4 top screws, remove 3 back panel screws, and unplug the RX ANT OUT and DRIVE IN connectors.
4. Replace the four VCO shield plate screws with the type listed above. Figure 3
5. Close the subchassis and secure it with the screws removed in step 3.
6. Locate the A.F. board on the bottom of the transceiver. Figure 4
7. Remove the board's mounting screws and disconnect the necessary connectors to expose the bottom of the board.
8. Locate the foil pattern area shown in Figure 5. This area is below IC11.
9. Cut the foil pattern and add the components shown in Figure 6.
10. Assemble the transceiver. Remember to plug in the two connectors on the back panel.

PAGE 1 OF 2

This modification is covered under the 1 year warranty.

Time required to perform the modification is 1 hr or less. (C) 020691EWP

KENWOOD U.S.A. CORPORATION

2201 EAST DOMINGUEZ STREET · LONG BEACH, CALIFORNIA 90810
MAILING: P.O. BOX 22745 · LONG BEACH, CALIFORNIA 90801-5745
TELEPHONE: (213) 639-9000

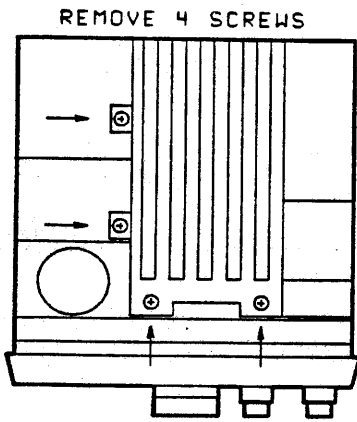


FIGURE 1

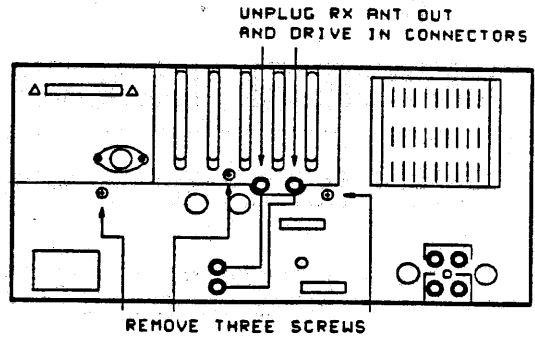


FIGURE 2

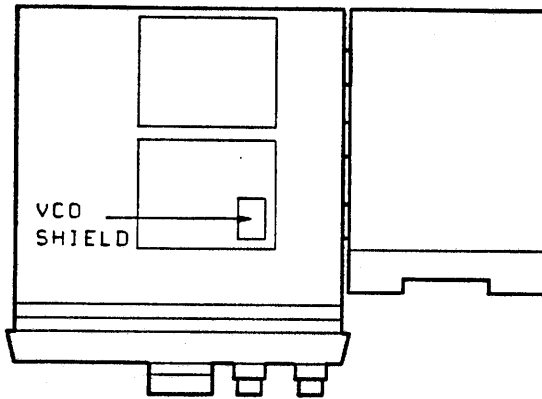


FIGURE 3

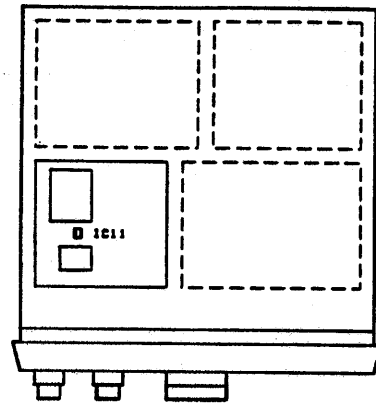


FIGURE 4

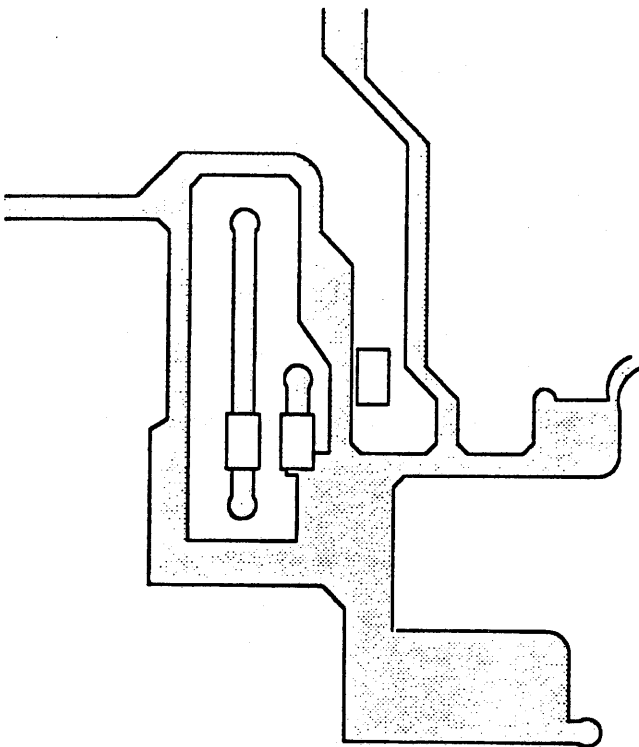


FIGURE 5

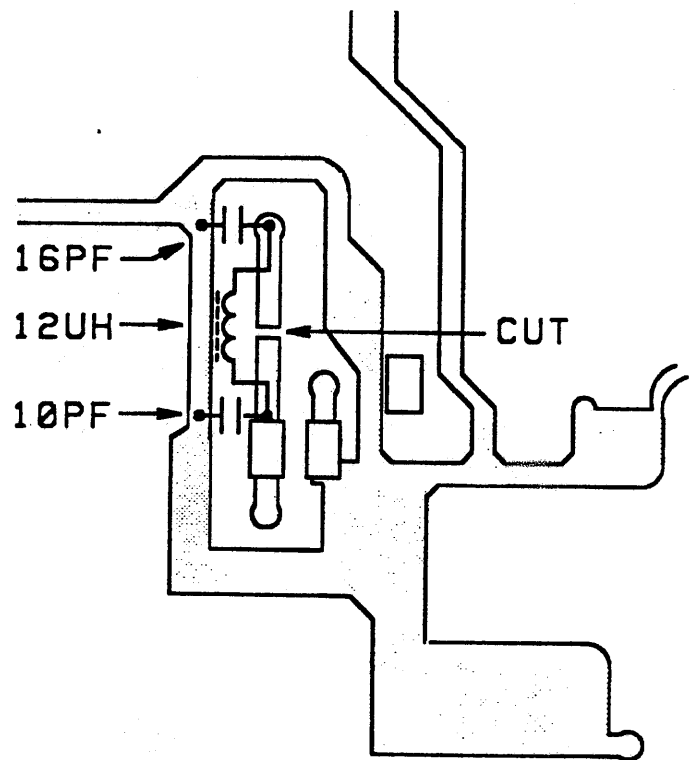


FIGURE 6